

Transformers for LED Products^C

- Transformers are required for Lumishelf™ and Lumiback, ordered separately
- 60 watt capacity, 7.5 vertical feet
- Single transformer powers five 36" shelves
- UL/CE/CB Listed

LSST5A

- LSST Transformers for LED Products
- 5 60 watts, 7.5 vertical feet
- A Adapter



Spider Cables for LED Products^C

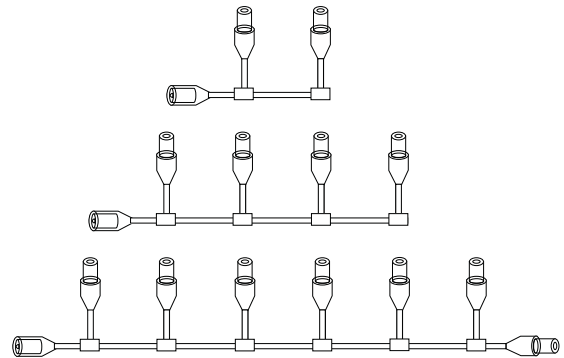
- LSS2WC and LSS6WC Spider Cables have connections approximately 6" OC and each lead is approximately 6" long
- LSS4WC Spider Cable has 60" leads, 60" OC
- Spider Cables can be utilized to connect multiple surfaces or backs to a single transformer

- Refer to transformer information for capacities

LSS(OPT)WC

- LSS Spider Cables for LED Products
- OPT 2 = 2 Connections
4 = 4 Connections
6 = 6 Connections
- WC Wire Connectors

Part Number	Connections
LSS2WC	2
LSS4WC	4
LSS6WC	6



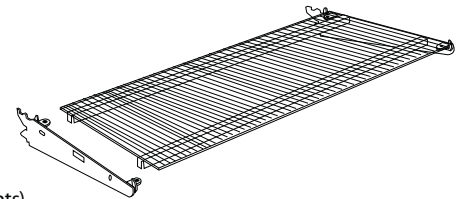
Lumishelf™

Lumishelf™ Acrylic LED Shelf Assembly^C

- Light-guide plate directs light on merchandise, improving visibility
- Assembly contains LED Shelf Surface and Glass Shelf Frame
- Weight capacity 40 lbs

LSSGA(NW)(ND)-(OPT)

- LSSGA Lumishelf™ Surface with GSF Frame Assembly
- NW Nominal Width
36" or 48" (914 mm or 1219 mm)
- ND Nominal Depth
10" to 18" in 2" increments
(254 mm to 457 mm in 51 mm increments)
- R R=Optional Reflector
Blank= No Reflector

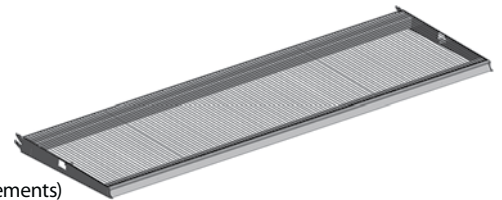


Lumishelf™ Acrylic LED LUSF Assembly^C

- Includes LUSA frame with tag mold front, Lumishelf™ surface
- Surface is recessed into frame (No LED edge highlighting)
- Weight capacity 100 lbs

LSSLA(NW)(ND)-(OPT)

- LSSLA Lumishelf™ Upper Shelf with LUSF Frame Assembly
- NW Nominal Width 36" or 48" (914 mm or 1219 mm)
- ND Nominal Depth
12" to 24" in 2" increments
(305 mm to 610 mm in 51 mm increments)
- R R=Optional Reflector
Blank= No Reflector



NOTE: Must order required transformer separately. Transformer is UL/CE/CB listed. Spider connector cables utilized to connect multiple surfaces to a single transformer. Refer to Transformer information for capacities.



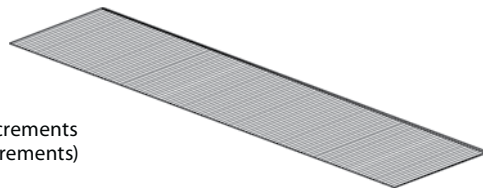
Lumishelf™ Surface for GSF^C

- Lumishelf™ Surface only for installation on Glass Shelf Frame (GSF)
- Frame with two crossbars is recommended (shown below)



LSSG(NW)(ND)-(OPT)

- LSSG Lumishelf™ Surface for GSF
 NW Nominal Width 3' or 4'
 (914 mm or 1219 mm)
 ND Nominal Depth 10" to 18" in 2" increments
 (254 mm to 457 mm in 51 mm increments)
 R R=Optional Reflector
 Blank= No Reflector

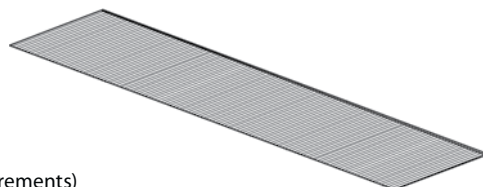


Lumishelf™ Surface for LUSF^C

- Light-guide plate directs light onto the merchandise, which improves visibility
- Weight capacity 100 lbs, when used with Lighted Upper Shelf Frame, LUSF

LSSL(NW)(ND)-(OPT)

- LSSL Lumishelf™ Surface
 NW Nominal Width
 3' or 4' (914 mm or 1219 mm)
 ND Nominal Depth
 12" to 24" in 2" increments
 (305 mm to 610 mm in 51 mm increments)
 R R=Optional Reflector
 Blank= No Reflector



Lighted Upper Shelf Frame for Lumishelf™ Surface^B

LUSF-(NW)(ND)

- LUSF Lighted Upper Shelf Frame for Lumishelf™ Surface
 NW Nominal Width 3' or 4'
 (914 mm or 1219 mm)
 ND Nominal Depth 12" to 24" in 2" increments
 (305 mm to 610 mm in 51 mm increments)



NOTE!

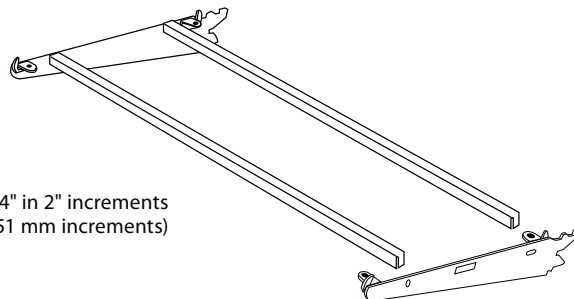
LUSF and GSF require different size surfaces.

Lumishelf™ Glass Shelf Frame^B

- Glass Shelf Frame includes two crossbars

GSF(NW)(ND)-2B

- GSF Glass Shelf Frame
 NW Nominal Width 3' or 4'
 (914 mm or 1219 mm)
 ND Nominal Depth 12" to 24" in 2" increments
 (305 mm to 610 mm in 51 mm increments)
 2B 2 Crossbars



Lumishelf™ Radius LED Shelf Assembly^C

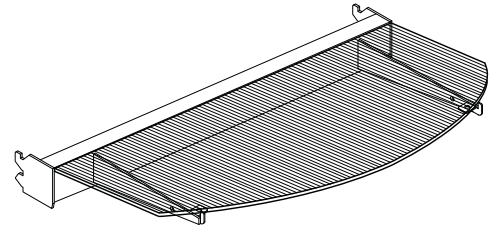
- Radius Lumishelf™ Surface and Frame has an overall depth of LSSRA that is the nominal depth plus 6" (152 mm)
Example: LSSRA-3614 would have actual depth of 20" (508 mm)
- Load capacity 100 lbs



LSSRA(NW)(ND)-(OPT)

LSSRA Radius Lumishelf™ Surface with RGSFF Frame Assembly

- NW Nominal Width 36" or 48" (914 mm or 1219 mm)
- ND Nominal Depth 14", 16", and 18" (356 mm, 406 mm or 457 mm)
- R R=Optional Reflector
Blank= No Reflector



Lumishelf™ Radius Surface^C

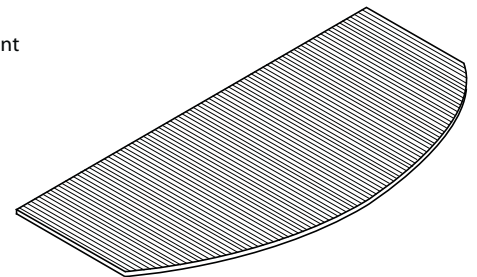
- Radius matches radius on Upper and Base Shelves with Radius Front (SUSRF, SBSRF), not Radius Glass shelves (RGS)
- Weight capacity 100 lbs when used with Glass Shelf Radius Frame, GSRFF-(NW)(ND)



LSSR(NW)(ND)-(OPT)

LSSR Lumishelf™ Surface with Radius Front

- NW Nominal Width 3' or 4' (914 mm or 1219 mm)
- ND Nominal Depth 14", 16" and 18" (356 mm, 406 mm or 457 mm)
- R R=Optional Reflector
Blank= No Reflector



Lumishelf™ Glass Shelf Radius Frame^B

- Glass Shelf Frame for Lumishelf™ Radius Surface
- Lumishelf™ Radius Surface ordered separately

GSRFF-(NW)(ND)

GSRFF Glass Shelf Radius Front Frame

- NW Nominal Width 3' or 4' (914 mm or 1219 mm)
- ND Nominal Depth 14", 16" and 18" (356 mm, 406 mm or 457 mm)

