

Madix™ Rx Wood Cabinets

Four Drawer Card File Unit



Part Number
PWD-424-CF
<ul style="list-style-type: none"> • Four drawers • Card followers field installed

Five Drawer Unit



Part Number
PWD-524
<ul style="list-style-type: none"> • Five drawers with 6" interior clearance

Bottle Unit



Part Number
PWB-24
<ul style="list-style-type: none"> • Two 10° slant bottle drawers • One small bottom drawer

Sink Unit



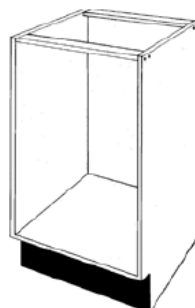
Part Number
PWS-24
<ul style="list-style-type: none"> • Includes stainless steel sink to be field installed with countertop

Narcotics Unit



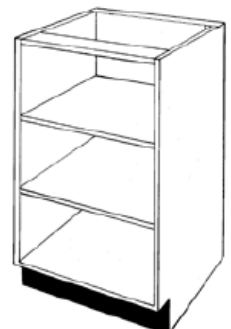
Part Number
PWN-24
<ul style="list-style-type: none"> • Locking top drawer • Two drop-front drawers behind locking door

Open Unit



Part Number
PWA-24
<ul style="list-style-type: none"> • Open unit

Open Unit with Two Shelves



Part Number
PWA-224
<ul style="list-style-type: none"> • Two adjustable shelves

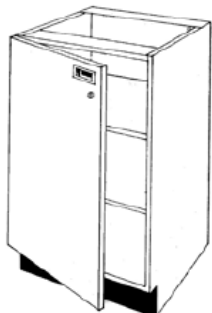
Door Unit with Two Shelves



Part Number
PWA-224D
<ul style="list-style-type: none"> • Full height door with two adjustable interior shelves

Madix™ Rx Wood Cabinets

Locking Door Unit with Two Shelves



Part Number
PWA-224DL
<ul style="list-style-type: none"> • Full height locking door • Two adjustable shelves

Waste Unit



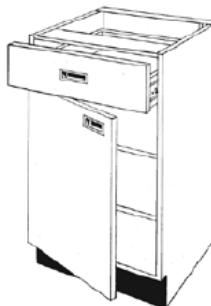
Part Number
PWW-24
<ul style="list-style-type: none"> • Short door for interior access • Waste container not included

Open Unit with Drawer and One Shelf



Part Number
PWADR-124
<ul style="list-style-type: none"> • Open unit with single drawer and one adjustable shelf

Locking Door Unit w/Drawer & Shelf



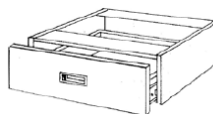
Part Number
PWADR-224DL
<ul style="list-style-type: none"> • Full height locking door • Two adjustable shelves

Narcotics Unit



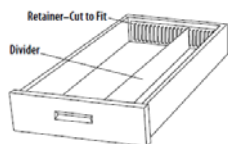
Part Number
PWCRT242438
<ul style="list-style-type: none"> • Angled footrest covered with hard-ribbed rubber • Includes adjustable shelf (not shown)

Single Drawer



Part Number
PDU6-24
<ul style="list-style-type: none"> • Use as single drawer • Optional lock

Open Unit with Two Shelves



Part Number
DU-DK
<ul style="list-style-type: none"> • Five dividers with shelf-adhesive plastic banding strip • Field installation